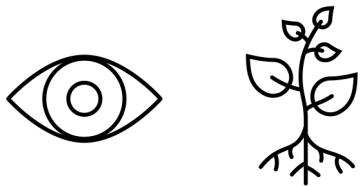




The botanical eye of Anna Atkins



Gabrielle de Lassus Saint-Geniès, PhD, artist, poetess

“Anna Atkins The world of a nineteenth century British woman scientist”

Friday 10th May 2024

Natural History Museum, London



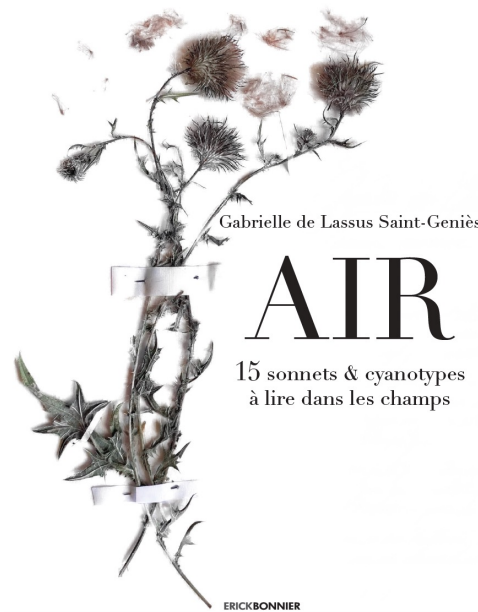
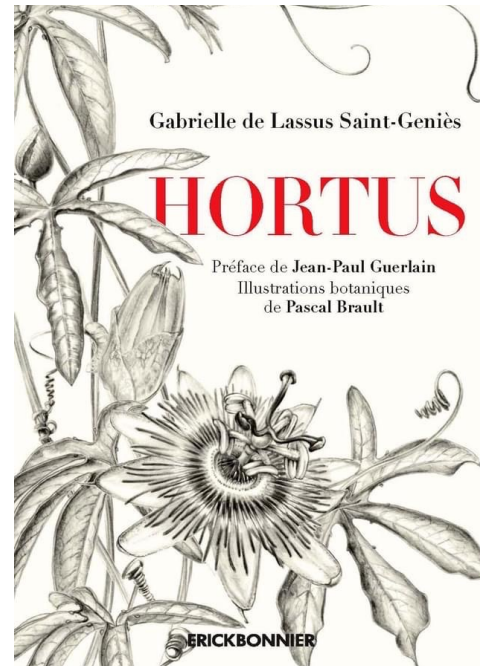
©GLSG, Tous droits réservés/All rights reserved

La conception intellectuelle de ce document est soumise à droits d'auteur en vertu de l'article L 122-4 du Code de Propriété Intellectuelle. Il est interdit d'utiliser ce travail sans mentionner explicitement son auteur.

The intellectual content of this document is subject to copyright in accordance with article L 122-4 of the French Intellectual Property Code. It is forbidden to use this work without explicit mention of its author.



GLSG



Who I am



L'ANGLAISE D'AZUR (THE AZURE ENGLISH LADY)

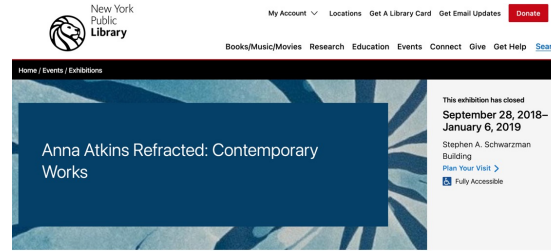
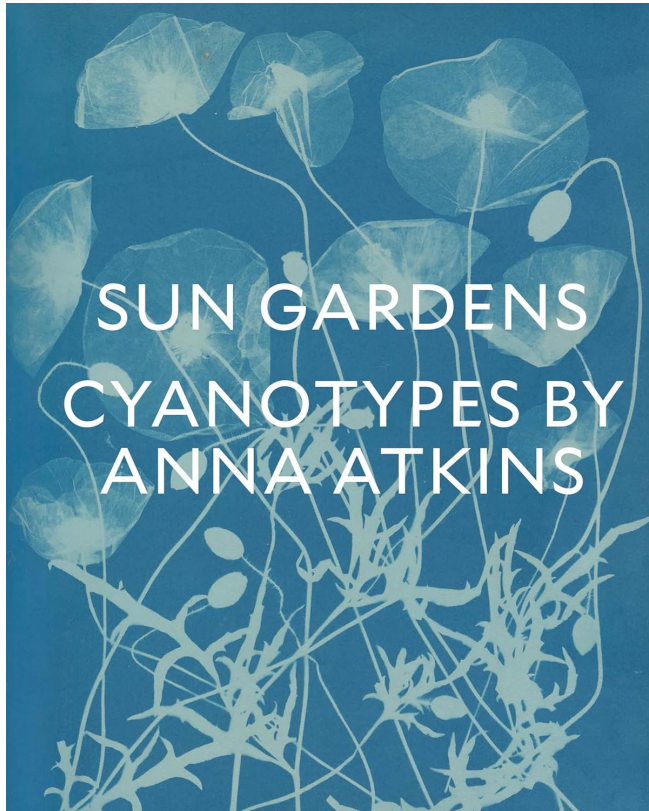
a fictional biography on
Anna Atkins written between
2017-2019

Erick Bonnier editor
2019

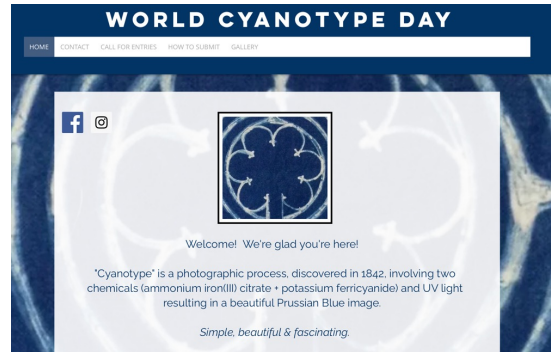




Writing and experimenting
cyanotype technique



Anna Atkins, from shadow to light



Google Doodle Honours Anna Atkins, First Woman Photographer And Botanist

Google has created a special Google Doodle commemorating the 216th birth anniversary of Anna Atkins

Updated: March 16, 2015 3:28 PM IST

By Editorial



Prof. Larry J. Schaaf,
*Daguerreotype portrait by Mike
Robinson, Toronto, 2015*
©The Talbot Catalogue Raisonné



MEMOIR
OF
J. G. CHILDREN, ESQ.
F.R.S. L. AND E., F.R.A., M.R.I., &c.
INCLUDING
SOME UNPUBLISHED POETRY
BY HIS FATHER AND HIMSELF.
"Such a man
Might be a copy to these younger times,"
SAY WILL THAT LONG
WESTMINSTER:
Written for Private Distribution only
BY JOHN BOWYER NICHOLS AND SONS,
25, PARLIAMENT STREET.
1858.



Research involving art, science and botany

The botanical female eye



George Adolphus Storey (1834-1919)

Contemplation

1859, oil on canvas, 31.9x 41.9 cm

©Sheffield Museums



John Dillwyn Llewelyn (1810-1882)

Thereza

1853-56, salted paper print, 23.2x19 cm

©Metropolitan Museum of Art



Unknown photographer

Mrs Atkins

early 1860s, albumen print, 8.4x5.7cm

©Nurstead Court Archives

Great predecessors



HILDEGARDE OF BINGEN
(1098-1179, German)



ANNA MARIA SYBILLA MERIAN
(1647-1717, German)



ELIZABETH BLACKWELL
(1707-1758, British)



JEANNE BARRET
(1740-1807, French)

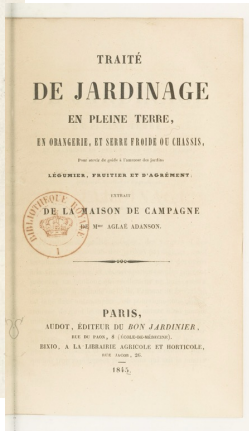
Invisible botanical sisters (1)



JOSÉPHINE DE BEAUHARNAIS
(1763-1814, French)



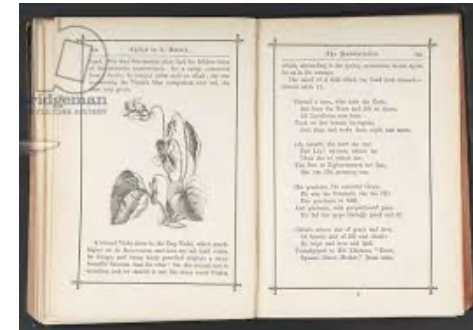
GEORGE SAND
(1804-1876, French)



AGLAÉ ADANSON
(1775-1852, French)



CLÉMENCE LORTET (1772-1835, French)

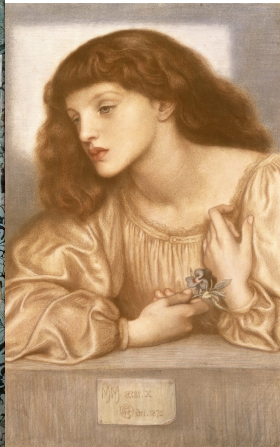


CHRISTINA ROSSETTI
(1830-1894, English)

Invisible botanical sisters (2)



EDITH HOLDEN (1871-1920, English)



MAY MORRIS (1862-1938, English)



EMILY DICKINSON
(1830-1886, American)

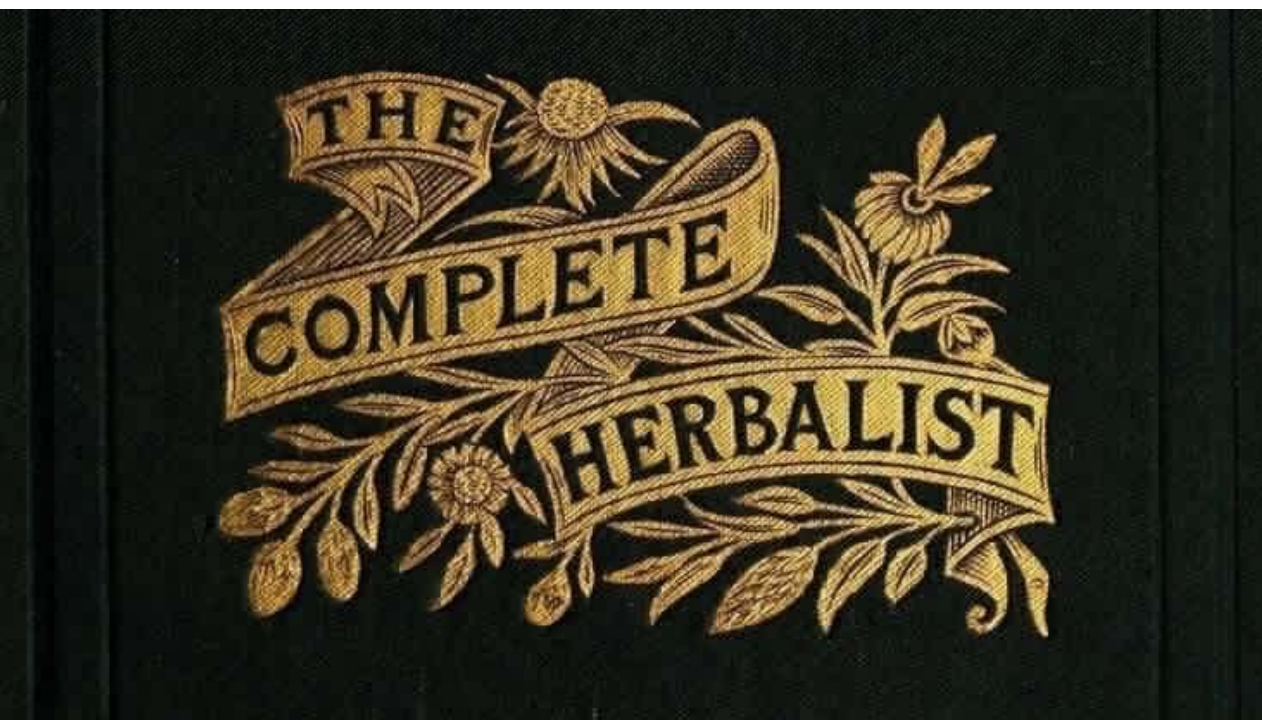
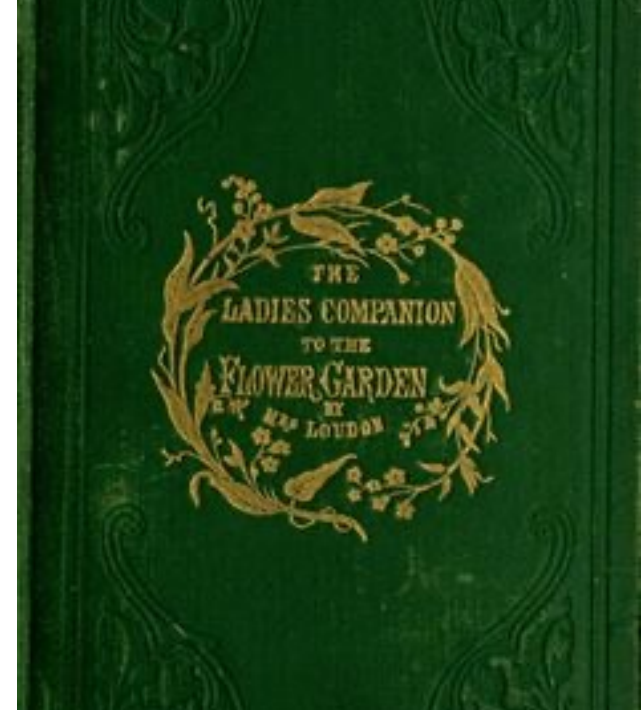
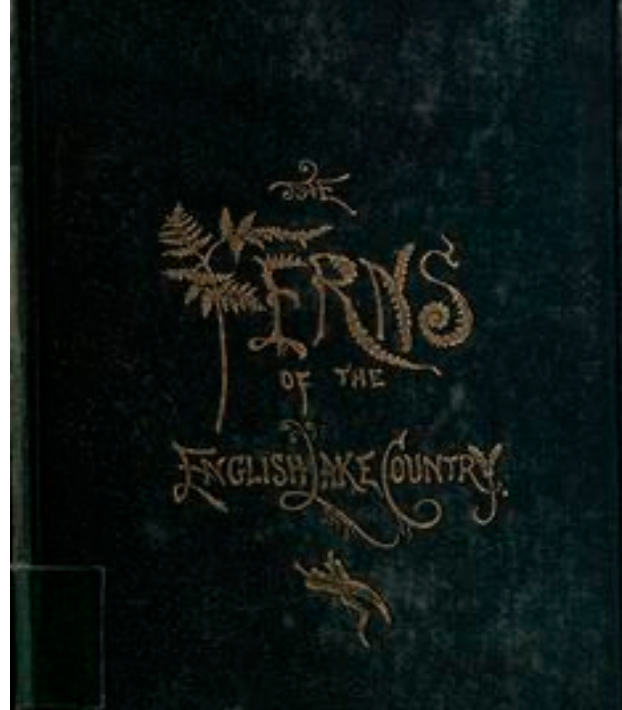
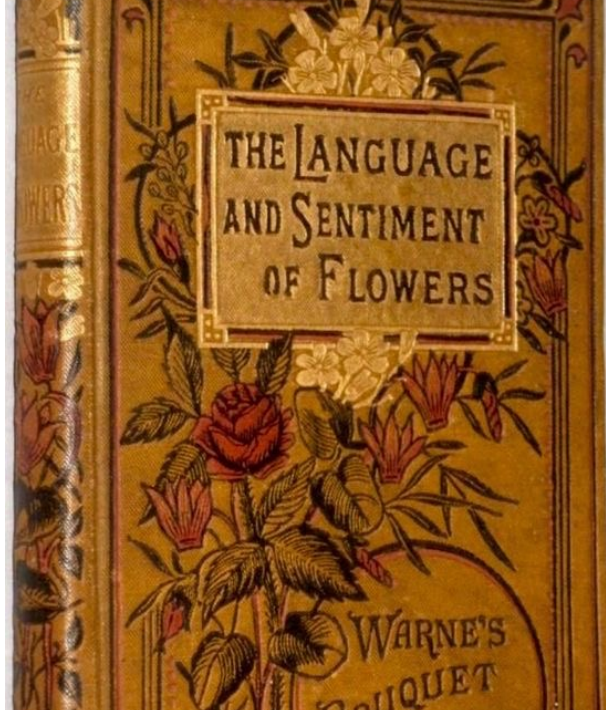
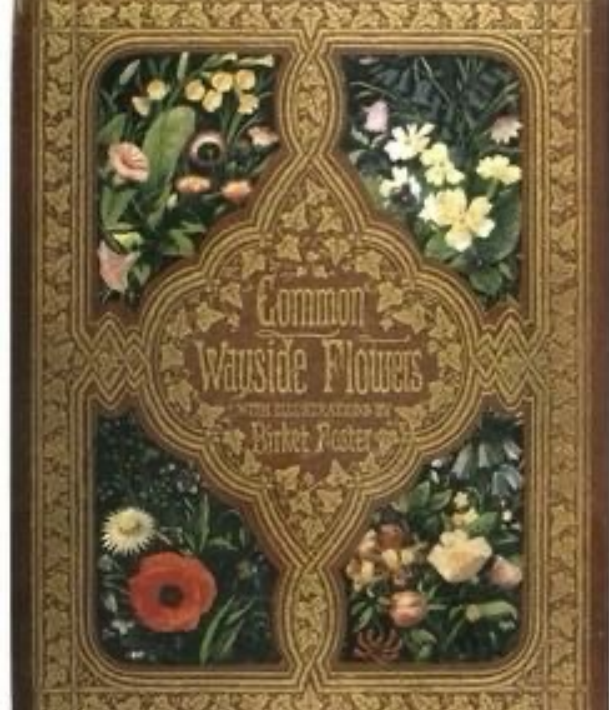


AGNÈS ARBER (1879-1960, English)



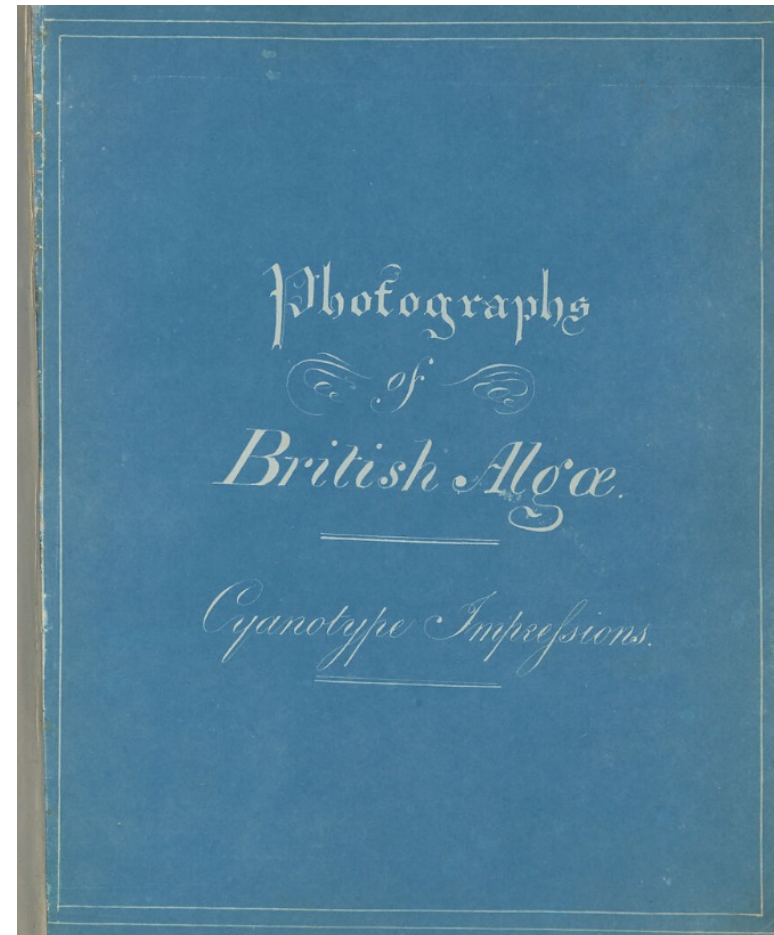
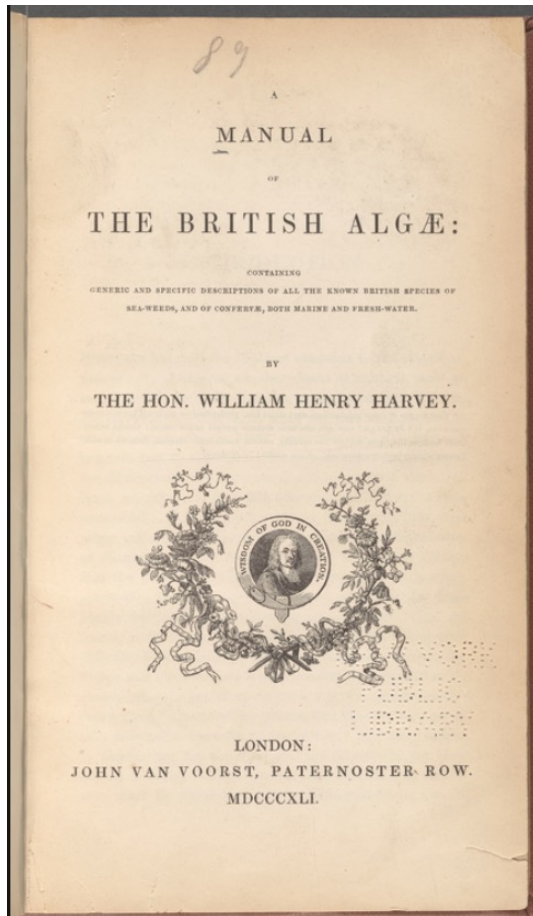
BEATRIX POTTER
(1866-1943, English)





Development of publications related to botany, gardening, floral symbolism requiring scientific and artistic illustrations

British Algae, from Harvey to Atkins





THE VICTORIAN ERA BETWEEN FAITH AND SCIENCE

"Whence, in fine, looking to the whole kingdom of organic nature, we find that our full receiving of its beauty depends first on the sensibility and then on the accuracy and touchstone faithfulness of the heart in its moral judgments (...)"

JOHN RUSKIN, *Modern Painters*, vol.II, "Of Vital Beauty", Merrill & Baker(1846) c.1870, p.100

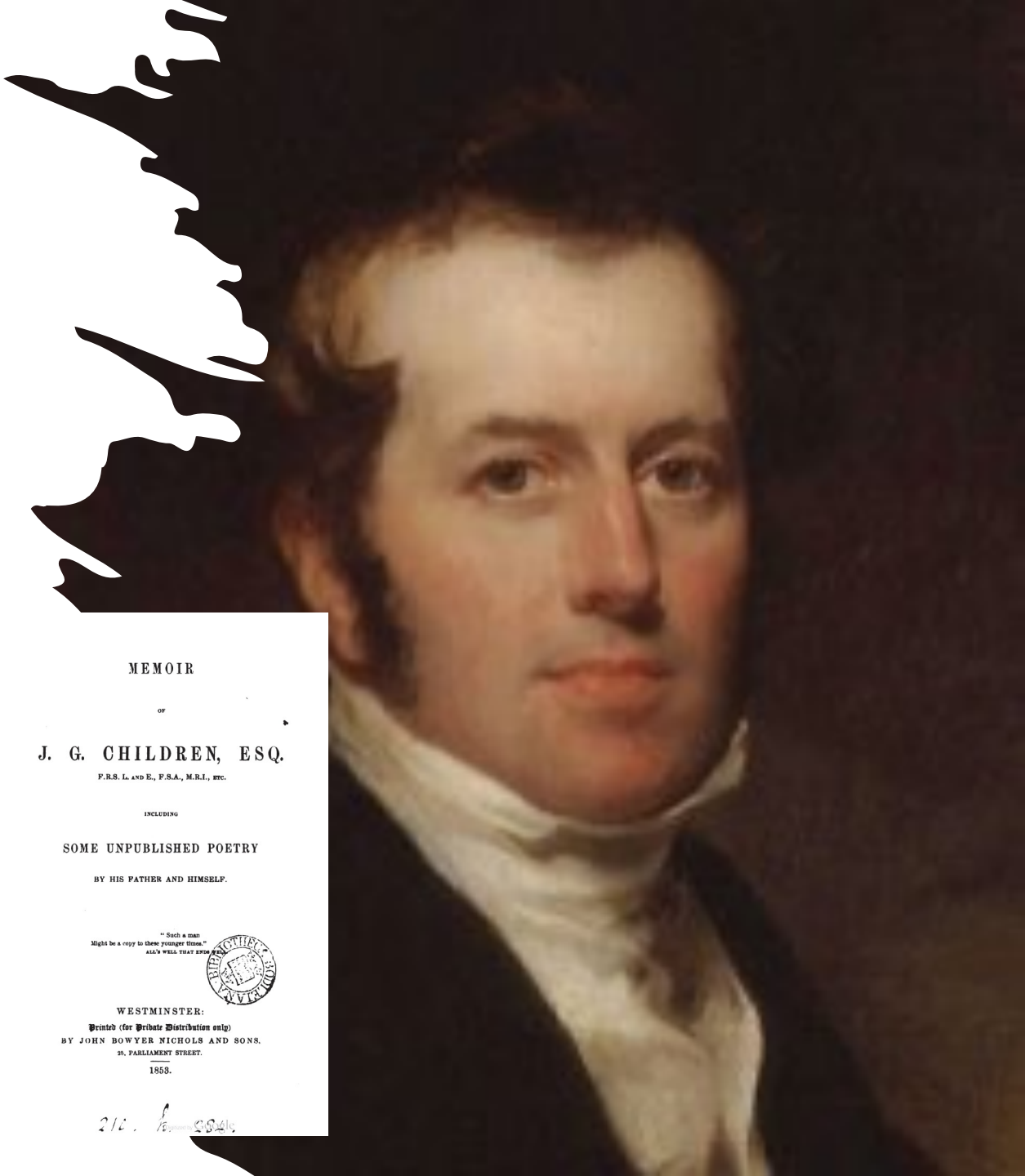
John Everett Millais (1829-1896) *Portrait of John Ruskin*, c.1853-54, oil on canvas, 78.7x68 cm ©Oxford, Ashmolean Museum

A RELIGIOUS ERA

" (...) Above all things, my child, strive to be good; pray to God Almighty night and morning, begin and end every day of your life with your prayers to your Creator, not merely repeating the words through form, but offering up to Him, indeed, the tribute of a thankful heart. Thus you may be sure of securing His blessing (endeavouring also always to do what is right) without which no situation in life is worth having—with which nothing is left to wish for. (...)"

Anna Atkins, *Memoir of J.G. Children*, 1853, p.75-76

Extract from a letter from J.G. Children to his daughter Anna, then aged 9 (1808)

A portrait of J.G. Children, a man with dark hair and a high-collared white shirt, looking slightly to the right. The portrait is partially obscured by a white silhouette of a hand holding a quill pen.

MEMOIR
OF
J. G. CHILDREN, ESQ.
F.R.S. L AND E., F.S.A., M.R.I., &c.
INCLUDING
SOME UNPUBLISHED POETRY
BY HIS FATHER AND HIMSELF.

"Such a man
Might be a copy to these younger times."
ALL WELLS THAT ARE OPEN



WESTMINSTER:
Printed (for Private Distribution only)
BY JOHN BOWYER NICHOLS AND SONS,
25, PARLIAMENT STREET.
1858.

212. A. 5546

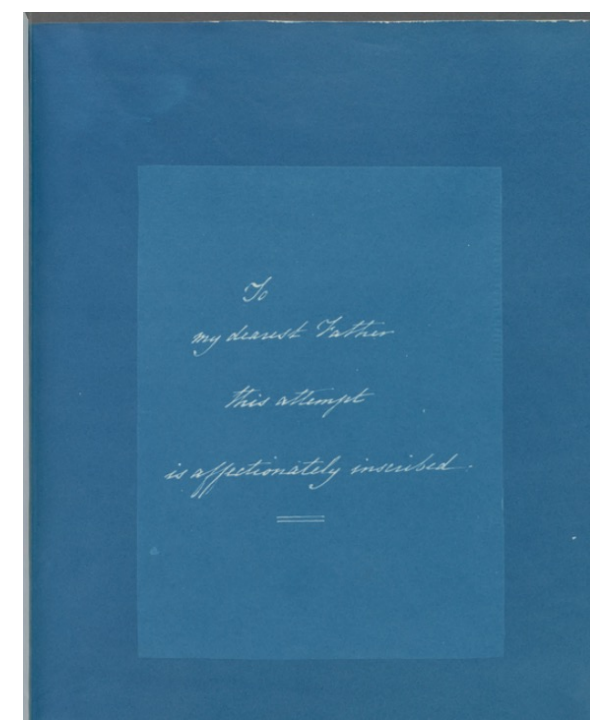
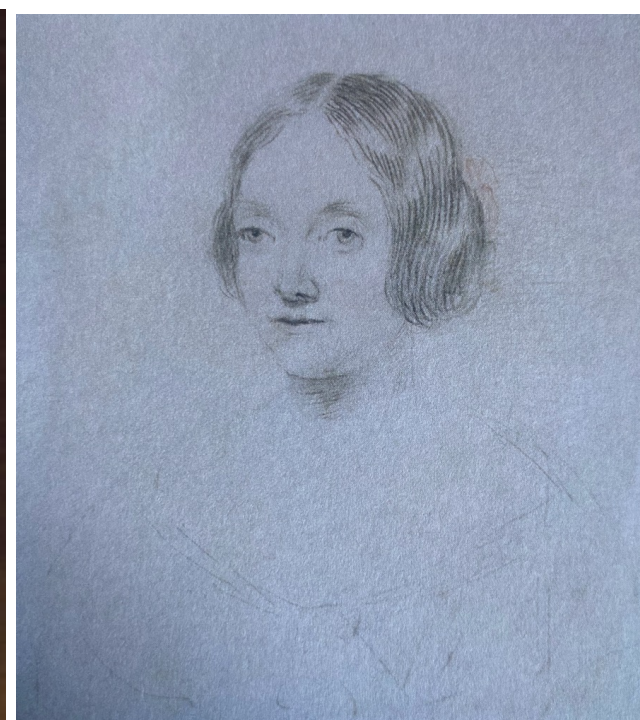
MYSTICISM AND BOTANY

« We can distinguish and analyse up to a certain point : there we are stopped by that invisible and intangible, but impassable veil, in which the Creator hides his operations. »

William Henry Harvey, *Manual of the British Algae*, 1841, introduction, VI.

Charles Allston Collins (1828-1873)
***Convent Thoughts*, 1850-51, oil on canvas, 84x59 cm ©Oxford, Ashmolean Museum**





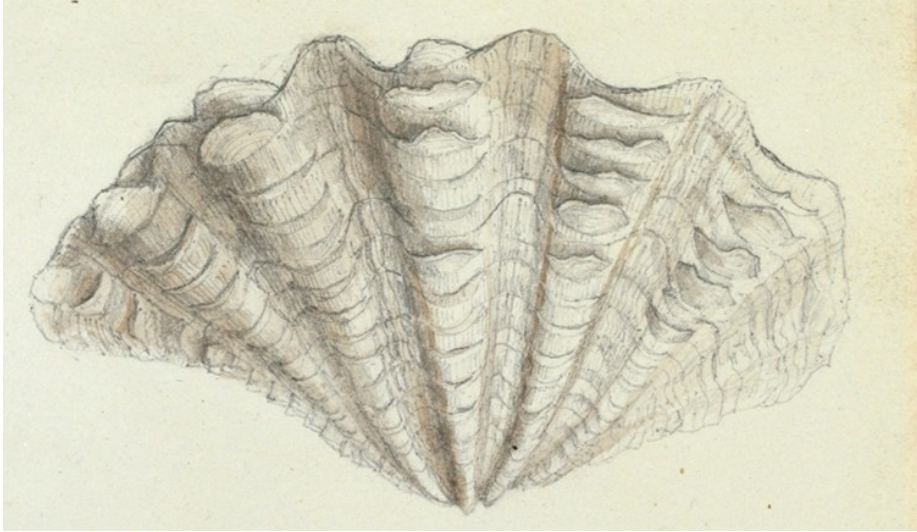
Benjamin Rawlinson Faulkner, *John George Children*, 1826, oil on canvas, 76.2x63.5cm, ©London, National Portrait Gallery

Unknown artist, *Anna Children*, ca 1820, pencil, 17.4x14.2 cm ©Nurstead Court Archives

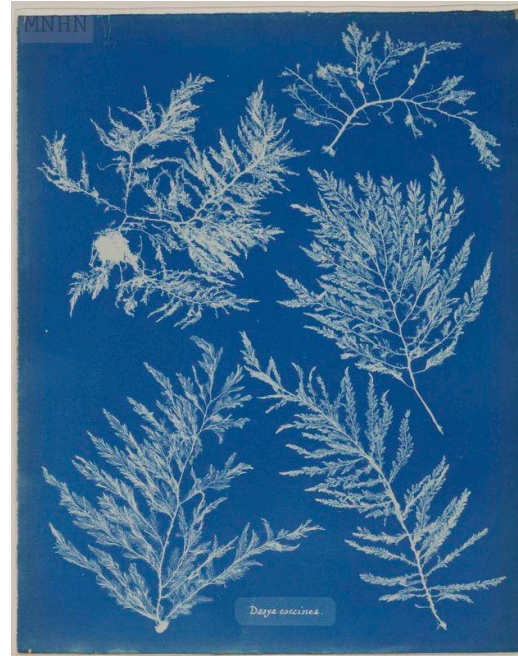
Blue plaque in Tonbridge & Malling Borough Council, dedication of British Algae from Anna « to my dearest Father this attempt is affectionately inscribed »

A close relationship between father and daughter

AN ARTISTIC TEMPERAMENT



Anna Children, *Tridacna gigas*, Nature. Reduced to $\frac{1}{2}$ the original size, 1823 or earlier, graphite and watercolor, 14.7x19.7cm. No.76 from an album of 256 original drawings by Anna Children for the English translation of Lamarck's *Genera of Shells*, c1820 ©London, NHM



Anna Atkins, *Dasya coccinea*, 1843-1853, cyanotype, 26x21 cm ©Paris, Muséum d'histoire naturelle



Anna Children, *The Waterloo Elm*, 27 september 1818, pencil and scraper, 37.5x27.5cm, ©Royal Collection Trust/HM King Charles III 2024

Anna, a twinkling star
in the middle of a
scientific constellation



**JOHN WILLIAM
HERSCHEL (1792-1871)**
mathematician,
astronomer, chemist



**ROBERT HUNT
(1807-1887)** scientist



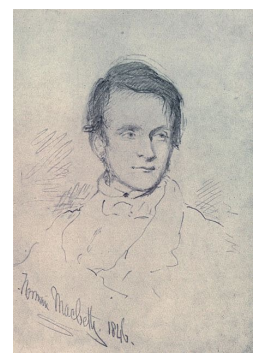
**WILLIAM JACKSON HOOKER
(1785-1865)** botanist



**JOHN GEORGE
CHILDREN (1777-1852)**
chimist, mineralogist,
scientist



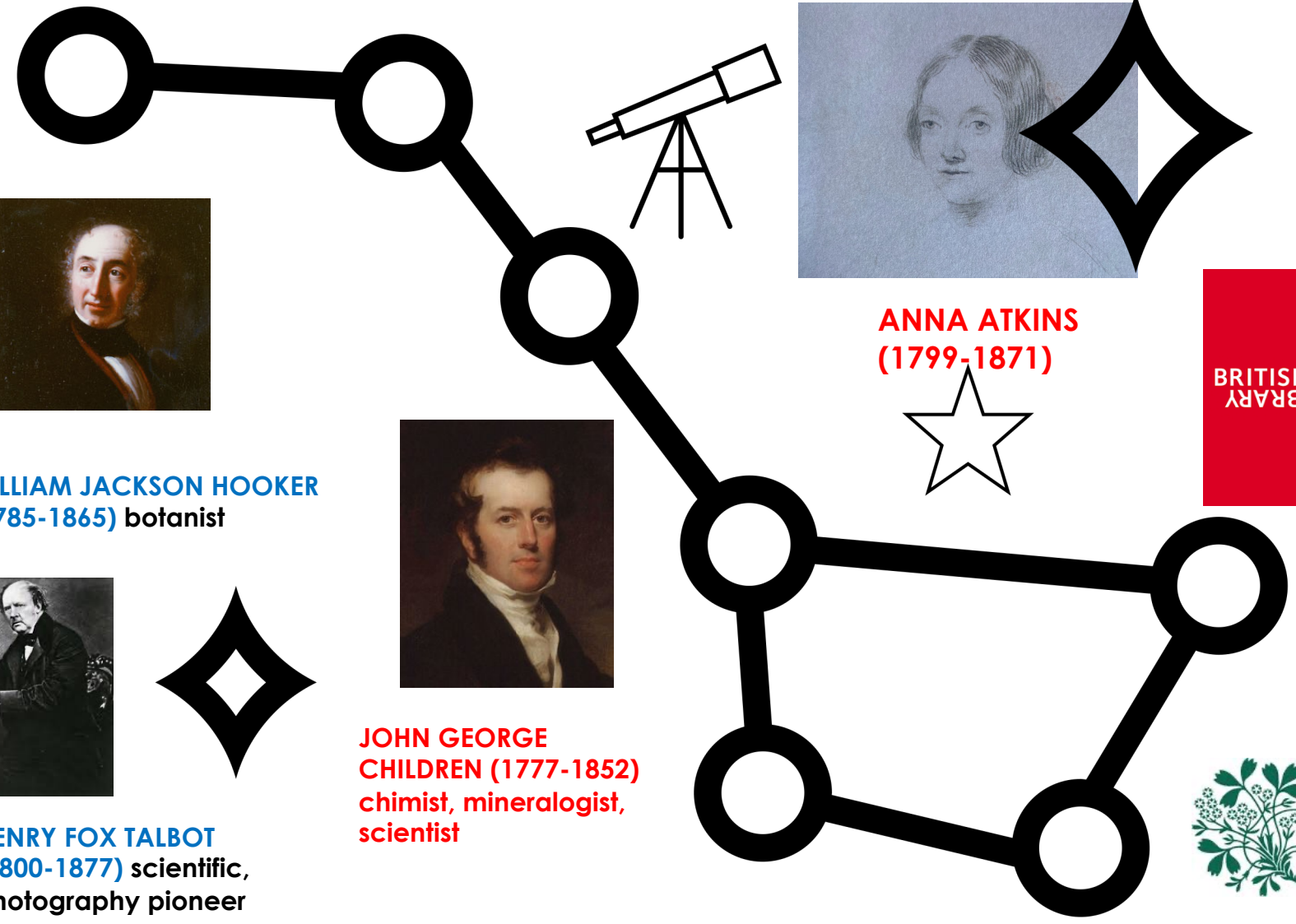
**HENRY FOX TALBOT
(1800-1877)** scientific,
photography pioneer



**ADAM WHITE
(1817-1878)** zoologist



**ANNA ATKINS
(1799-1871)**



The British
Museum



Royal Botanic Gardens
Kew



Royal
Botanic Garden
Edinburgh

EXTENDED CIRCLE



HUMPHRY DAVY
(1778-1829)
chemist



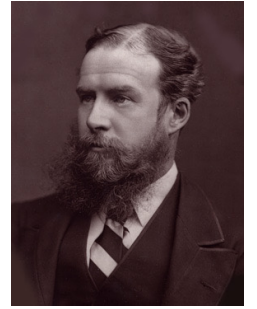
GEORGE CUVIER
(1769-1832)
naturalist



JOHN EDWARD GRAY
(1800-1875)
zoologist



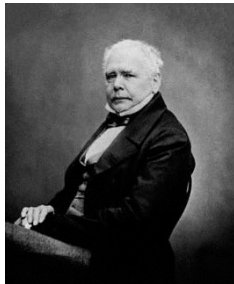
CHARLES HATCHETT
(1765-1847)
mineralogist
and chemist



JOHN LUBBOCK
(1834-1913)
scientist



JEAN-JACQUES AUDUBON
(1785-1851)
artist,
naturalist,
ornithologist



WILLIAM THOMAS BRANDE
(1788-1866)
chemist



DECIMUS BURTON
(1800-1881)
architect



JAMES BRITTEN
(1846-1924)
botanist

MICHAEL FARADAY
(1791-1867) chemist

Science and female collaboration



CONSTANCE FOX TALBOT (1811-1880)
first woman ever to take a photograph, wife of Henry Fox Talbot

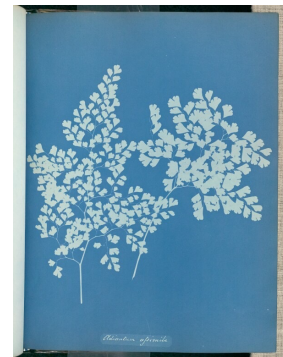
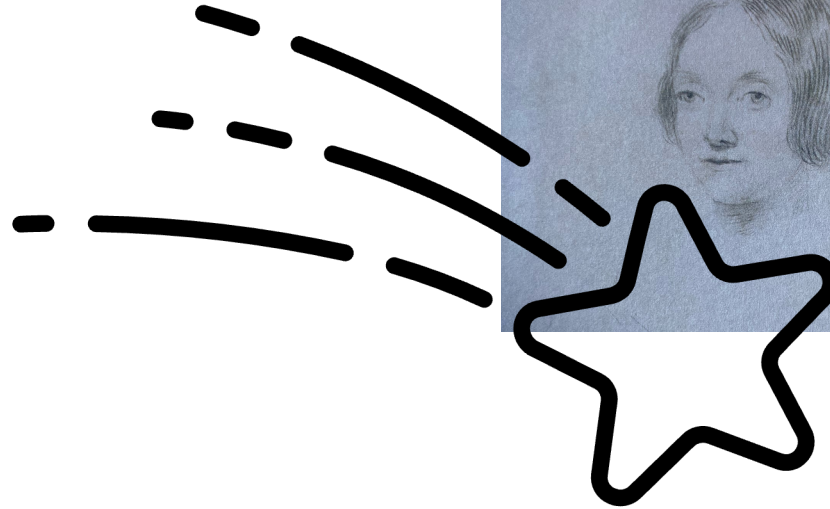


MARGARET HERSCHEL (1810-1884)
botanical artist, wife of John Herschel, contributed to the « Flora Herscheliana » with 132 botanical specimens from South Africa



Anna Frederica Brande Hatchett

Sophia Bliss



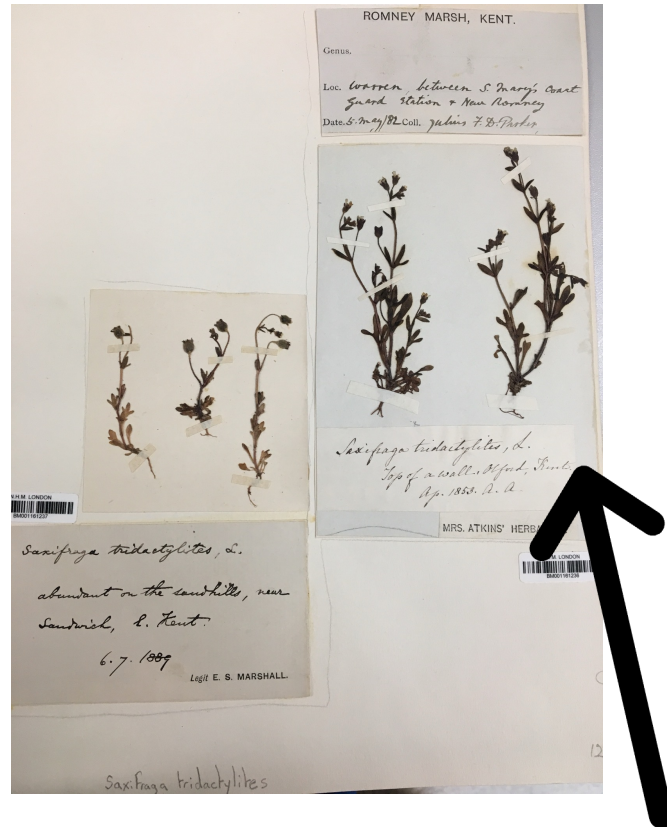
ANNE DIXON (1799-1864)
botanist friend of Anna Atkins, cyanotype artist



Isabella Herschel (1831-1893)



Anna's herbarium, a living archive



Anna Atkins - Herbarium « *Saxifraga tridactylites*, collected on a top of a wall, Otford, Kent, April 1853, A.A. » ©GLSG/NHM

WILLIAM GARDINER (1808-1852)
botanist

JOHN THOMAS IRVINE BOSWELL-SYME (1822-1888)
botanist

JOHN GILBERT BAKER (1834-1920)
botanist

ANNA RUSSELL (1807-1876)
botanist

SOPHIA ELIZABETH GRAY (1812-1907)
scientific illustrator

MARTHA MARIA ATWOOD (c.1810-1885) botanist

SAMUEL PICKWORTH WOODWARD (1821 – 1865) geologist and malacologist

GEORGE MAW (1832-1912) geologist

Etc.

103	BM000782684	<i>Epilobium obscurum</i> Schreb.	Anna Atkins
104	BM001168839	<i>Epilobium tetragonum</i> L.	Joseph Whittaker
105	BM001194254	<i>Phalaris canariensis</i> L.	Anne Dixon
106	BM001080589	<i>Herminium monorchis</i> (L.) R.Br.	Anna Atkins
107	BM001194277	<i>Glechoma hederacea</i> L.	Anna Atkins
108	BM001194199	<i>Chamerion angustifolium</i> (L.) Holub	James Alexander Brewer
109	BM001194200	<i>Chamerion angustifolium</i> (L.) Holub	Anna Atkins
110	BM001194201	<i>Chamerion angustifolium</i> (L.) Holub	Adam White
111	BM000783890	<i>Lamium purpureum</i> L.	Henry Kingsley
112	BM001154415	<i>Brachypodium pinnatum</i> (L.) P.Beauv.	Anna Atkins
113	BM001194279	<i>Milium effusum</i> L.	Anna Atkins
114	BM001194280	<i>Milium effusum</i> L.	Henry Martin Holman
115	BM000623304	<i>Teucrium chamaedrys</i> L.	Christopher Edmund Broome
116	BM001168880	<i>Polemonium caeruleum</i> L.	Henry Borron Fielding
117	BM001194205	<i>Apium nodiflorum</i> (L.) Lag.	Anna Atkins
118	BM001194301	<i>Bidens tripartita</i> L.	John Children
119	BM001194299	<i>Helleborus viridis</i> L.	Anna Atkins
120	BM001194189	<i>Acer pseudoplatanus</i> L.	Anna Atkins
121	BM001194185	<i>Scutellaria galericulata</i> L.	Anna Atkins
122	BM001194190	<i>Allium vineale</i> L.	John Thomas Irvine Boswell Syme
123	BM001194265	<i>Anthriscus caucalis</i> M.Bieb.	Anna Atkins
124	BM001168847	<i>Moneses uniflora</i> (L.) A.Gray	William Jackson Hooker
125	BM001168848	<i>Moneses uniflora</i> (L.) A.Gray	William Gardiner
126	BM001194204	<i>Carduus tenuiflorus</i> Curt	Anna Atkins
127	BM001165883	<i>Carex saxatilis</i> L.	William Gardiner
128	BM001194262	<i>Primula elatior</i> (L.) L.	James Alexander Brewer
129	BM001194260	<i>Elytrigia repens</i> (L.) Nevski	Anne Dixon
130	BM001168841	<i>Glaux maritima</i> L.	Anna Atkins
131	BM001194313	<i>Erigeron borealis</i> (Vierh) Simmons	William Gardiner
132	BM001194259	<i>Phleum arenarium</i> L.	anon.
133	BM001194255	<i>Trifolium arvense</i> L.	John Children
134	BM001194267	<i>Nymphoides peltata</i> (S.G.Gmel.) Kuntze	Anna Atkins
135	BM001168854	<i>Puccinellia distans</i> (Jacq.) Parl.	Anna Atkins
136	BM001068947	<i>Medicago Lupulina</i> L.	Anna Atkins
137	BM001168734	<i>Elatine hexandra</i> (Lapierre) DC.	William Jackson Hooker
138	BM001194321	<i>Carduus nutans</i> L.	Anna Atkins
139	BM001194310	<i>Antennaria dioica</i> (L.) Link.	Anna Atkins

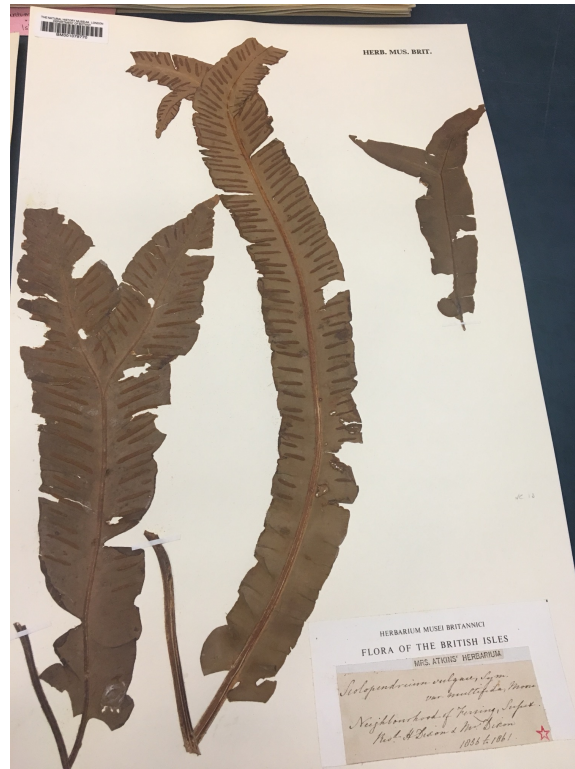
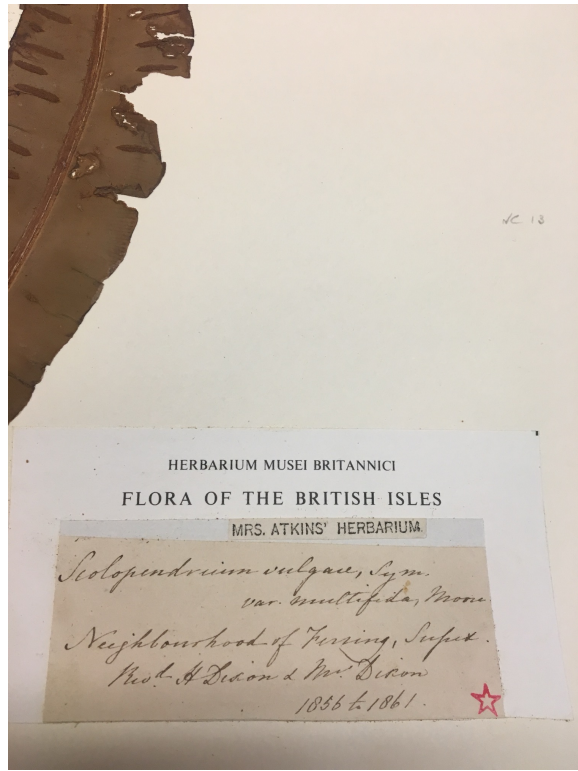
Extract of the Anna Atkins' Herbarium recently rediscovered showing many exchange of botanical specimens (work in progress)

©NHM

481	BM000051515	<i>Rumex parastri</i> Sm.	William Edward Wing
482	BM001195212	<i>Fagopyrum esculentum</i> Moench	Anna Atkins
483	BM001145299	<i>Hypericum tetrapterum</i> Fr.	John Children
484	BM001145306	<i>Hypericum humifusum</i> L.	John Children
485	BM001145312	<i>Hypericum calycinum</i> L.	James Alexander Brewer
486	BM001145313	<i>Hypericum calycinum</i> L.	Anna Atkins
487	BM001145338	<i>Drosera intermedia</i> Hayne	
488	BM001145364	<i>Viola odorata</i> L.	John Roby
489	BM001145368	<i>Viola lutea</i> Huds.	Anna Worsley Russell
490	BM000912552	<i>Brassica oleracea</i> L.	Joseph Barnabas French
491	BM001145439	<i>Rorippa amphibia</i> (L.) Besser	Anne Dixon
492	BM001145512	<i>Cochlearia anglica</i> L.	John Banker
493	BM001145543	<i>Crambe maritima</i> L.	Henry Taylor
494	BM001145546	<i>Erysimum cheiranthoides</i> L.	William Gardiner
495	BM001145550	<i>Reseda lutea</i> L.	Anna Atkins
496	BM000781017	<i>Reseda luteola</i> L.	Henry Kingsley
497	BM001145578	<i>Arctostaphylos uva-ursi</i> (L.) Spreng.	William Gardiner
498	BM001145583	<i>Calluna vulgaris</i> (L.) Hull	Anna Atkins
499	BM001081684	<i>Primula vulgaris</i> Huds.	Anna Atkins
500	BM001145626	<i>Lysimachia nummularia</i> L.	Anna Atkins
501	BM001145628	<i>Lysimachia tenella</i> L.	Edward Theodore Wise
502	BM001145679	<i>Potentilla argentea</i> L.	Daniel Stock
503	BM001145676	<i>Saxifraga cernua</i> L.	Anna

More than 500
specimens found !

©NHM



Botanical Society of London.
 Instituted, November 20th, 1839.
 75, NEWMAN STREET, OXFORD STREET.
 1839.

President,
 JOHN EDWARD GRAY, Esq., F.R.S. &c.

Vice-Presidents,
 J. G. CHILDREN, Esq., V.P., R.S. | D. C. MACREIGHT, M.D., F.L.S.

Treasurer,
 JOHN REYNOLDS, Esq.

Curator,
 DANIEL COOPER, Esq., A.L.S.

Secretary,
 GEORGE E. DENNES, Esq., F.L.S.

Other Members of the Council,

JOHN ANDERSON, Esq. M.E.S. FRANCIS BOSSEY, M.D. W. M. CHATTERLEY, Esq. T. W. GREENE, Esq. B.C.L. F.H.S.	JOSEPH FREEMAN, Esq. H. A. MEESON, M.D. WILLIAM ORD, M.D. W. H. WHITE, Esq. W. H. WILLSHIRE, M.D.
---	---

Local Secretaries,

MR. W. BAXTER, A.L.S. Botanic Garden, Oxford. T. BODENHAM, Esq., Abbey Fore Gate, Shrewsbury. MR. J. A. BREWER, Reigate, Surrey. JAMES BUCKMAN, Esq., Cheltenham. MR. ISAAC BROWN, Hitchin, Herts. G. H. BETTS, Esq., M.R.C.S. Watford, Herts. C. CONWAY, Esq., Pontnewydd, Monmouthshire. T. J. DYKE, Esq., M.R.C.S., Merthyr Tydfil, Glamorganshire. H. B. FIELDING, Esq., F.L.S., Stoddard Lodge, Lancaster. W. B. LUMB, Esq., M.R.C.S. Rochdale, Lancashire. T. G. R. RYLANDS, Esq., Bewsey House, Warrington. M. H. COWELL, Esq., Faversham, Kent. J. W. HOWELL, Esq., M.R.C.S., Bath.	G. H. K. THWAITES, Esq., Bristol. ROBERTS LEYLAND, Esq., Halifax, Yorkshire. EDWIN LEES, Esq., F.L.S., Dryadville Cottage, Worcester. F. C. LUKIS, Esq., Guernsey. T. B. SALTER, M.D. F.L.S. Poole, Dorsetshire. M. J. F. SIDNEY, Esq., Cowpen, near Morpeth, Northumberland. D. STOCK, Esq., Bungay, Suffolk. DR. FERDINAND KRAUSS, Cape of Good Hope. JOHN KNOTT, Esq., M.R.C.S., Adelaide Town, South Australia. JOHN J. LAUGHTON, Esq., Kingston, Jamaica. MR. ARTHUR WALLIS, Chelmsford, Essex. T. B. HALL, Esq., Coggeshall, do.
---	---



SPECIMENS EXCHANGES

- Specimen from Anna Dixon

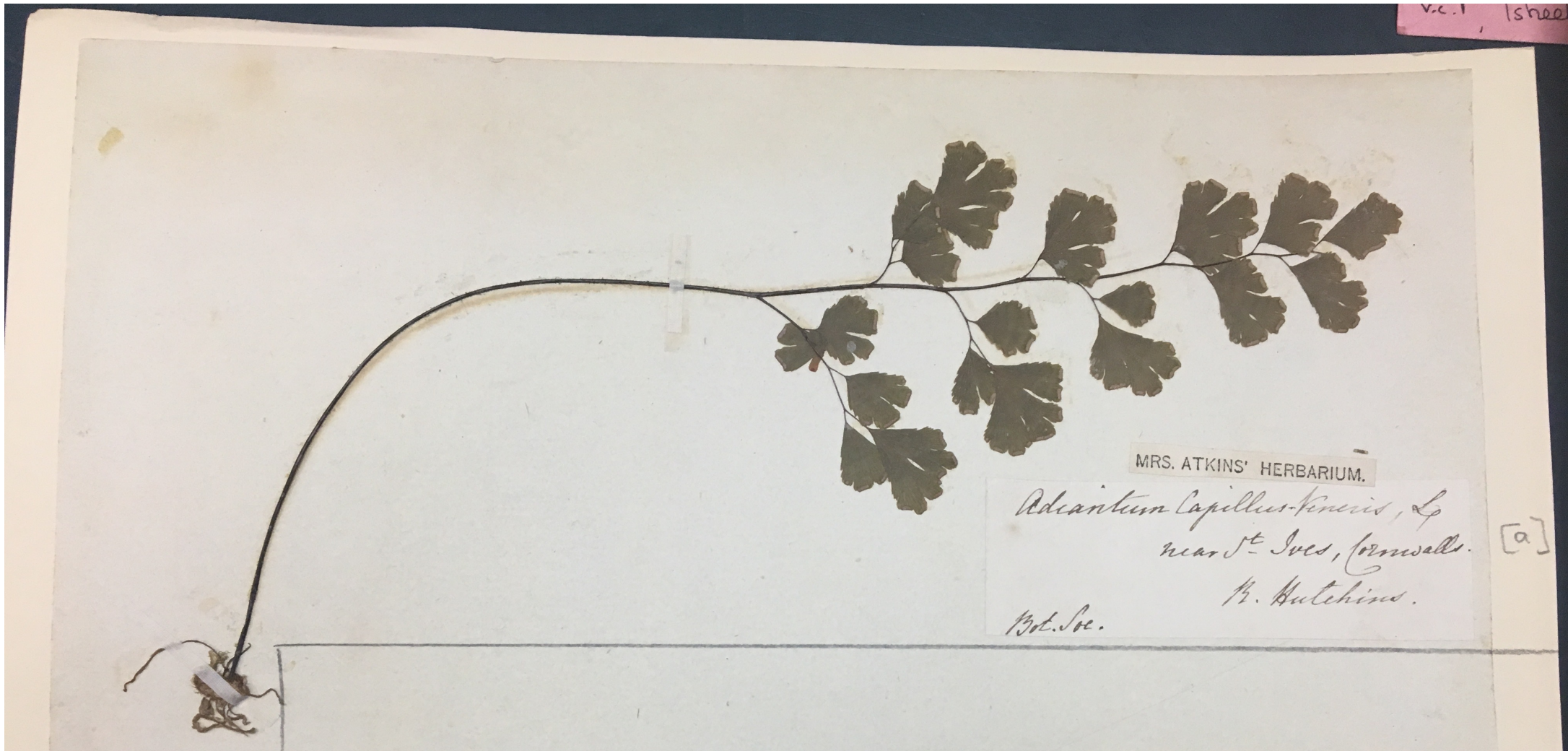
Scolopendrium vulgare,
 Neighbourhood of Ferring,
 Sussex, Revd. H. Dixon & Mrs
 Dixon, 1856 to 1861 ©NHM

THE BOTANICAL SOCIETY OF LONDON is instituted for the promotion and diffusion of Botanical Science, by the

formation of an Herbarium; the exchange of specimens with other Societies, or with individuals; the reading of original and other Papers; the formation also of a Library and Museum; and by the establishment of a Botanic Garden, as soon as the funds of the Society will permit.

Proceedings of the Botanical Society of London, Darton and Clark, London, 1839, pp.95 + 99-100

v.c.1 (sheet)

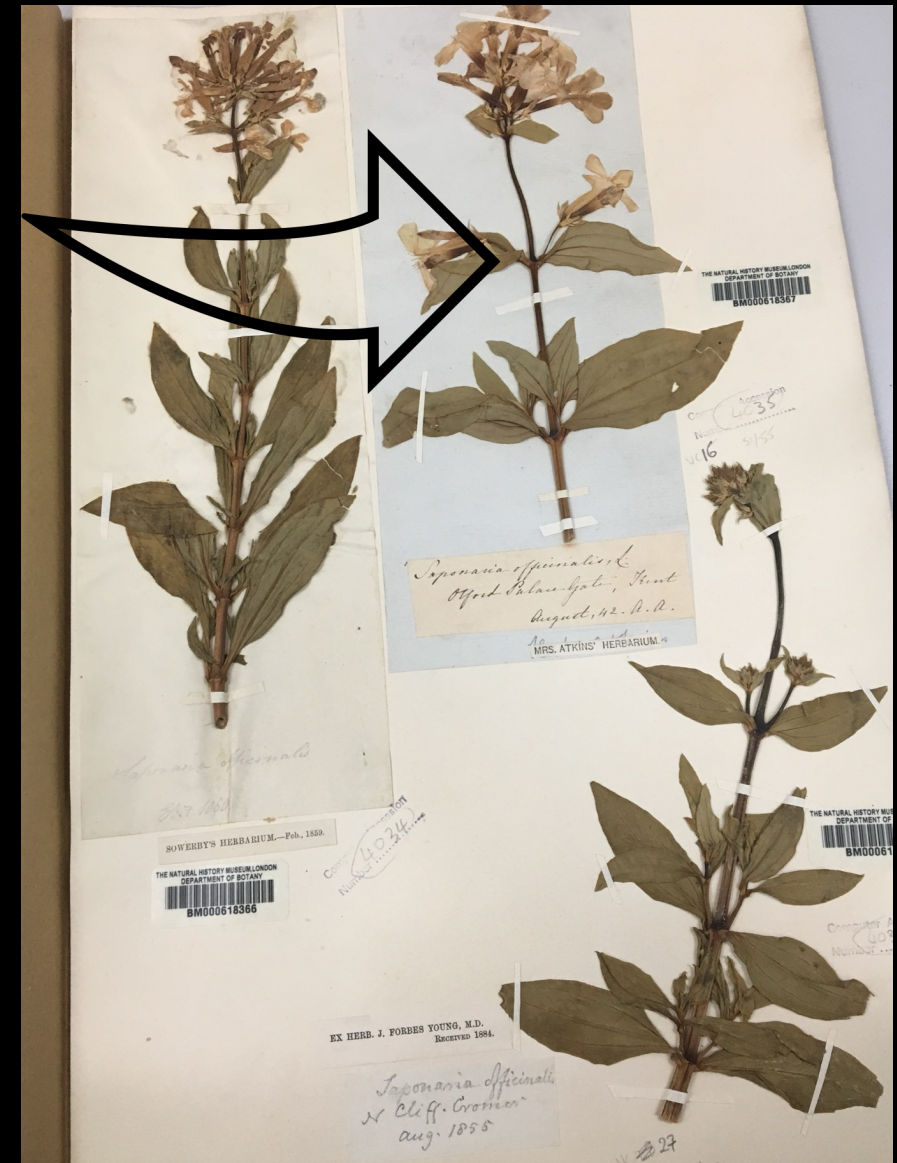
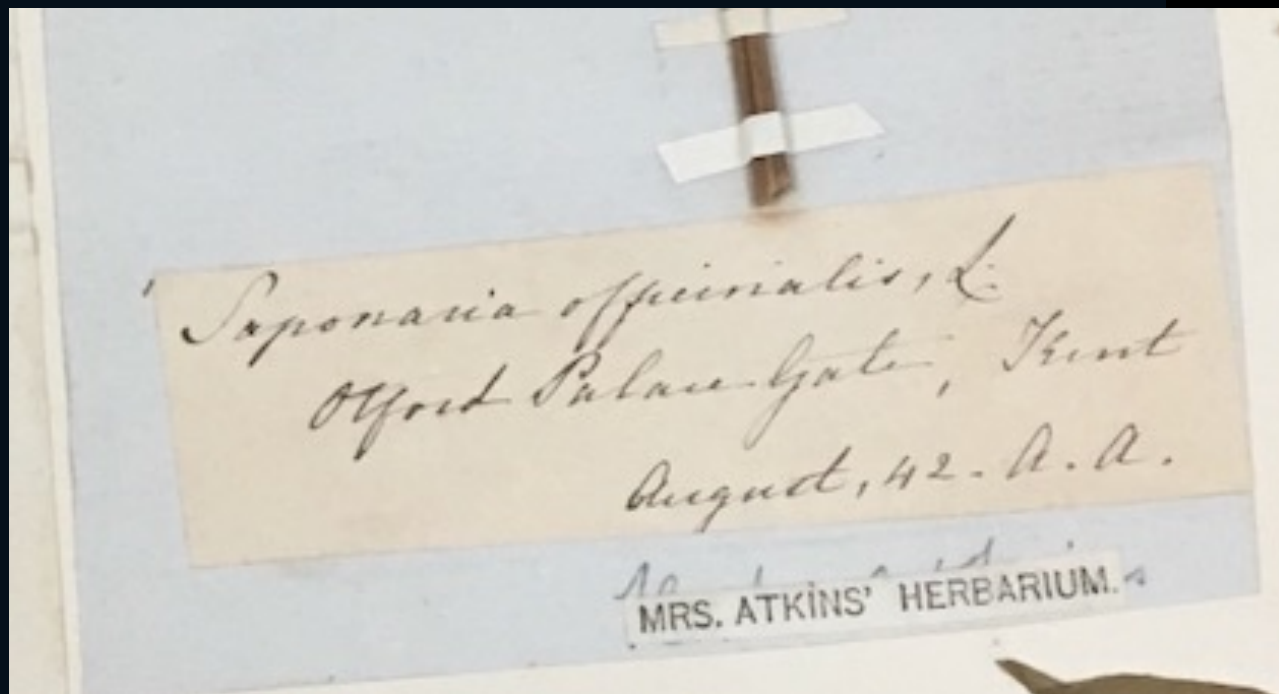


CHALLENGES

MRS ATKINS' HERBARIUM
Adiantum Capillus-Veneris, near St Ives,
 Cornwall, B. Hutchins (?)
 Bot. Soc. ©NHM/GLSG

Plant locations and dates can help to know more about Anna's life

« MRS ATKINS' HERBARIUM
Saponaria officinalis, L,
Otford Palace Gate, Kent
August, 42. A.A. » ©NHM





HERB. J. T. I. BOSWELL-SYME
Presented by F.J. Hanbury, 1932

Orchis morio L,
Halstead Kent, 5 – 52,
Mrs Atkins©NHM

SPECIMENS COLLECTED
IN HALSTEAD PLACE



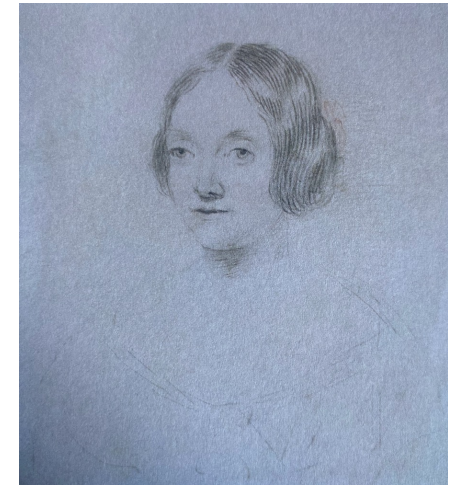
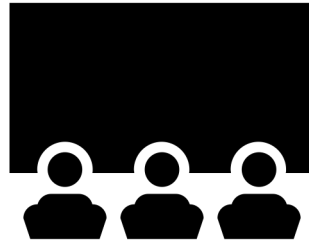
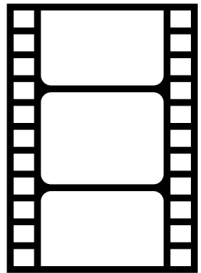
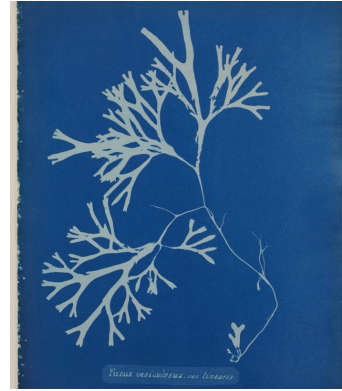
SARGASSUM, Ag.	LAMINARIA, Lamour.	DICTYOTA, Lamour.
vulgare, Ag.	digitata, Lamour.	dichotoma, Lamour.
deciferum, Ag.	obovata, Lamour.	atramenta, Grev.
CYSTOSEIRA, Ag.	accoleris, Lamour.	DICTYOSOPHON, Grev.
ericoides, Ag.	debilis, Ag.	paniculaceus, Grev.
granulata, Ag.	fascis, Ag.	STRIARIA, Grev.
barbata, Ag.	Phyllitis, Lamour.	attenuata, Grev.
paniculata, Grev.	DESMARSETIA, Lamour.	PUNCTARIA, Grev.
fibrosa, Ag.	ligulata, Lamour.	latifolia, Grev.
HALYDRYS, Lyngb.	aculata, Lamour.	platynea, Grev.
siliquosa, Lyngb. n. p.	DICHLORIA, Grev.	tenuissima, Grev.
FUCUS, Linn. Ag.	viridis, Grev.	ASTEROCOCCUS, Lamour.
vesiculosus, L. n. var. 37	SPOROCHNUS, Ag.	compressus, Griff.
cetrinoides, L.	pedunculatus, Ag.	Turneri, Hook.
serratus, L.	rhizodes, Ag.	echinatus, Grev.
nodosus, L.	Cabrera, Ag.	pusillus, Hook.
Mackaii, Turm.	EIAIONEMA, Berk.	CHORDA, Stack.
canaliculatus, L.	villanovi, Berk.	lomentaria, Grev.
tuberculatus, Huds.	GVILERIA, Grev.	filum, Lamour.
HIMANTHALIA, Lyngb.	multifida, Grev.	CLADOSTEPHUS, Ag.
lorea, Lyngb.	HALYSERIS, Tozzetti.	verticellatus, Lyngb.
MCHINA, Ag.	polypodioides, Ag.	spongiosus, Ag.
pygmaea, Ag.	PADINA, Adans.	SPHACELARIA, Lyngb.
confinis, Ag.	Pavonia, Lamour.	silicina, Ag.
ALARIA, Grev.	deusta, Hook.	scoparia, Lyngb.
esculenta, Grev.		plumosa, Lyngb.

From Botany... to Cyanotype



Rhodomenia laciniata
©Paris, Museum

S. plumosum (nearly found on the British coast)



CONCLUSION :

WHY NOT A BEAUTIFUL MOVIE ABOUT ANNA ATKINS ?



END

gabrielle_lsg_art Imagination : Anna Atkins
bathing her cyanotypes 💙

©Screenshot Instagram
gabrielle_lsg_art, 2020

COPYRIGHT DE CE DOCUMENT/DOCUMENT COPYRIGHT

- ©GLSG, Tous droits réservés/All rights reserved

La conception intellectuelle de ce document est soumise à droits d'auteur en vertu de l'article L 122-4 du Code de Propriété Intellectuelle. Il est interdit d'utiliser ce travail sans mentionner explicitement son auteur.

The intellectual content of this document is subject to copyright in accordance with article L 122-4 of the French Intellectual Property Code. It is forbidden to use this work without explicit mention of its author.

- Pour citer ce travail, veuillez utiliser la mention suivante/ *To quote or cite this work, please use the following mention :*

de LASSUS SAINT-GENIÈS Gabrielle, « The botanical eye of Anna Atkins », communication donnée dans le cadre de la journée d'hommage à Anna Atkins : "Anna Atkins The world of a nineteenth century British woman scientist", Natural History Museum, London, Friday 10th May 2024.

Link : <https://laplumedeloiseaulyre.com/?p=15579>